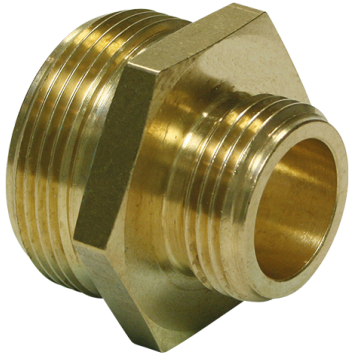


Reduce nipple



With hexagon and BSPP male thread

Norm thread	DIN EN ISO 228-1
Thread description	BSPP thread / G-thread
Material	Brass

Art.-no.	Thread size 1	Thread size 2	Weight (kg/pce)
5325006010	1/4"	3/8"	0,030
5325006013	1/4"	1/2"	0,038
5325010013	3/8"	1/2"	0,040
5325010019	3/8"	3/4"	0,075
5325013019	1/2"	3/4"	0,059
5325013025	1/2"	1"	0,080
5325019025	3/4"	1"	0,085
5325025032	1"	1.1/4"	0,124
5325025038	1"	1.1/2"	0,169
5325025050	1"	2"	0,278
5325032038	1.1/4"	1.1/2"	0,145
5325032050	1.1/4"	2"	0,273
5325038050	1.1/2"	2"	0,267
5325050063	2"	2.1/2"	0,420
5325050075	2"	3"	0,686
5325050100	2"	4"	1,315
5325063075	2.1/2"	3"	0,800

