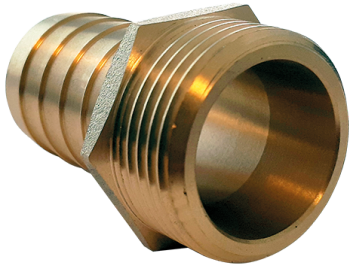


Hose coupling

With serrated hose tail, hexagon and male thread, flat sealing



Norm thread	DIN EN ISO 228-1
Thread description	BSPP thread / G-thread
Material	Brass

Art.-no.	For hose Ø inner (mm)	Male thread	Weight (kg/pce)
5327006006	6	1/4"	0,017
5327010010	10	3/8"	0,026
5327013013	13	1/2"	0,037
5327019019	19	3/4"	0,060
5327025025	25	1"	0,077
5327032032	32	1.1/4"	0,154
5327038038	38	1.1/2"	0,170
5327050050	51	2"	0,292
5327063063	63	2.1/2"	0,406
5327075075	76	3"	0,544
5327100100	100	4"	0,925

