



## DHV 30 AF TANK - HIGH VACUUM



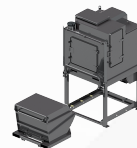
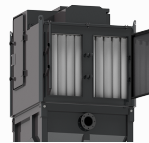
STEELWORKS AND FOUNDRIES



CEMENT



POWER PLANTS



- ✓ Sturdy vacuum cleaner for intensive use
- ✓ Powerful lobe pump with electric motor
- ✓ High performances and long-lasting equipment
- ✓ High efficiency filtration
- ✓ Semi-automatic filter cleaning system
- ✓ Easy to handle
- ✓ Detachable container with fork lift intakes which make it is easy to handle
- ✓ Discharge system by means of a valve
- ✓ Low noise level
- ✓ Great autonomy of the system



### SUCTION UNIT

Voltage	V - Hz	400 - 50
Power	kW	30
Electrical protection	IP	55
Max waterlift	mmH2O	5000
Max air flow	m <sup>3</sup> /h	1800
Suction inlet	mm	140



### FILTER UNIT

Filter Type		30 Sleeves
Surface - Diameter	cm <sup>2</sup> -mm	160.000 - 120
Material - Efficiency	IEC 60335-2-69	Polyester - M
Cleaning system		Automatic
Secondary filter		Safety cartridge
Surface	cm <sup>2</sup>	70.000



### COLLECTION UNIT

Capacity	lt.	800
Discharge type		Forkable container



### VOLUME

Dimensions	cm	168x160x291h
Weight	kg	2320



## SUCTION UNIT

The suction unit is provided with a volumetric vacuum pump with tri-lobe rotors which can reach very high airflow and waterlift levels

A safety filter guarantees the maximum protection for both motor and pump

The electrical panel is suitable for remote control and a push-button is installed on the chassis as standard



## FILTER UNIT

2 sets of filtering sleeves work continuously and alternatively. Doing so, they guarantee the maximum filtration efficiency and protection for the motor

The filter is cleaned by an automatic system with backwash of the chambers. Compressed air is provided by an onboard compressor.



## COLLECTION UNIT

Forklift intakes for easy discharge.

The material is collected into a capacious and detachable container, which is easy to handle thanks to fork lift intakes

The material is safely and quickly discharged by means of a lever

The unit is manufactured with thick painted steel for improved sturdiness and long-lasting lifetime



## OPTIONALS

- ✓ ABSOLUTE HEPA FILTER
- ✓ ATEX CERTIFICATION
- ✓ PNEUMATIC AND AUTOMATIC FILTER CLEANING SYSTEM
- ✓ ALTERNATIVE DISCHARGE SYSTEMS