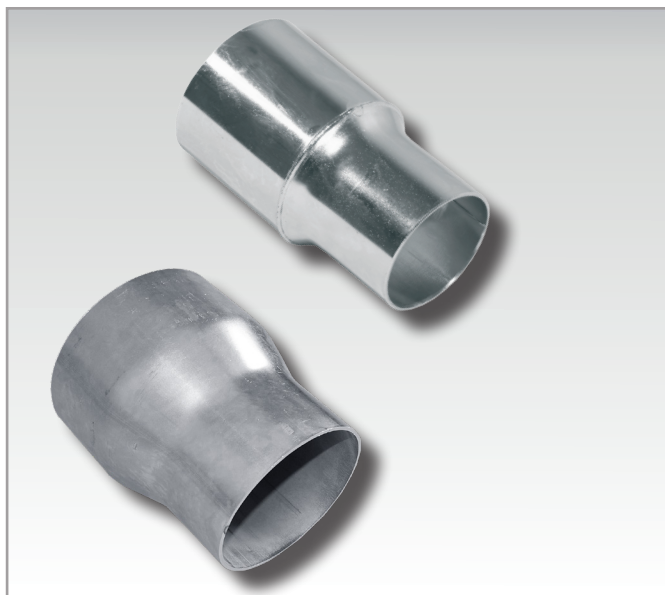


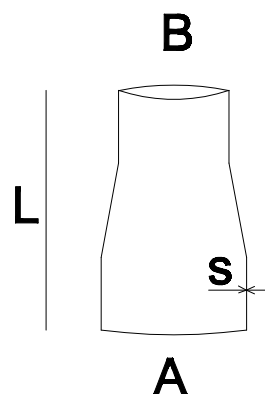


STCO/STCS



Cone STCO is manufactured in welded galvanized design.

Cone STCS is manufactured in welded stainless steel AISI 304.



| Art.nr | Ø A mm | Ø B mm | Length mm | S mm | Weight kg |
|--------------|--------|--------|-----------|------|-----------|
| STCO-050-038 | 050 | 038 | 122 | 1,5 | 0,3 |
| STCO-063-050 | 063 | 050 | 122 | 1,5 | 0,24 |
| STCO-076-050 | 076 | 050 | 130 | 1,5 | 0,50 |
| STCO-076-063 | 076 | 063 | 130 | 1,5 | 0,40 |
| STCO-089-050 | 089 | 050 | 210 | 1,5 | 0,57 |
| STCO-089-063 | 089 | 063 | 210 | 1,5 | 0,57 |
| STCO-089-076 | 089 | 076 | 165 | 1,5 | 0,47 |
| STCO-102-063 | 102 | 063 | 150 | 2,0 | 0,70 |
| STCO-102-076 | 102 | 076 | 140 | 2,0 | 0,69 |
| STCO-108-063 | 108 | 063 | 150 | 2,0 | 0,70 |
| STCO-108-076 | 108 | 076 | 140 | 2,0 | 0,72 |
| STCO-108-102 | 108 | 102 | 120 | 2,0 | 0,72 |
| STCO-114-102 | 114 | 102 | 120 | 2,0 | 0,62 |
| STCO-127-076 | 127 | 076 | 160 | 2,0 | 1,05 |
| STCO-127-102 | 127 | 102 | 140 | 2,0 | 1,05 |
| STCO-127-108 | 127 | 108 | 160 | 2,0 | 0,87 |
| STCO-152-102 | 152 | 102 | 160 | 2,0 | 0,8 |
| STCO-152-108 | 152 | 108 | 150 | 2,0 | 1,35 |
| STCO-152-127 | 152 | 127 | 150 | 2,0 | 1,10 |
| STCO-203-152 | 203 | 152 | 180 | 2,0 | 1,30 |
| STCO-203-127 | 203 | 127 | 150 | 2,0 | 1,35 |

| Art.nr | Ø A mm | Ø B mm | Length mm | S mm | Weight kg |
|--------------|--------|--------|-----------|------|-----------|
| STCS-050-038 | 050 | 038 | 125 | 1,5 | 0,18 |
| STCS-063-050 | 063 | 050 | 125 | 2 | 0,34 |
| STCS-076-050 | 076 | 050 | 135 | 2 | 0,38 |
| STCS-076-063 | 076 | 063 | 135 | 2 | 0,41 |
| STCS-102-063 | 102 | 063 | 157 | 2 | 0,63 |
| STCS-102-076 | 102 | 076 | 140 | 2 | 0,49 |