

## Antistatic food hose and pharmaceutical hose, medium-heavy and reinforced, stainless steel (INOX)

### Application

- flexible hose/ ducting for abrasive powder, bulk material, granulate and for gases
- food industry, pharmaceutical industry: foodstuff, pharmaceutical
- conveying of dry foods e.g. rice, cereals, sugar, milk powder, powders, coffee, tea, grains, flour, frozen foods
- vacuum conveying equipment, vacuum hopper, suction conveyor, dosing system
- pelleting machines/ tablet presses
- mixer, dryer, packaging machine, bulk-bag (big bag)-charging and discharging, mill
- explosion hazard area

### Properties

- medium-heavy duty
- highly abrasion resistant
- Approved by an independent testing laboratory for the complete hose acc. to EU-Directive 10/2011 and EC 1935/2004 and the latest EU-Directive 2015/174, food grade polyurethane, complies with: FDA 21 CFR 177.2600

- Approval acc. to EU-Directive 10/2011 (food simulant E) and EC 1935/2004
- odourless and tasteless
- microbe and hydrolysis resistant
- good resistance to oil, gasoline and chemicals
- very good low temperature flexibility
- permanently antistatic wall: according to ISO 8031 electrical and surface resistance  $<10^9 \Omega$  (according to TRGS 727  $<2,5 \cdot 10^9 \Omega \cdot m$  and NFPA 652  $10^8$ - $10^9 \Omega$ )
- in accordance with ATEX 2014/34/EU (1999/92/EC) and German TRGS 727: pneumatic transport of flammable dusts and bulk materials (Zone 20, 21, 22 inside), aspiration of combustible dusts (Zone 22 inside),
- in accordance with ATEX 2014/34/EU (1999/92/EC) and German TRGS 727: for conveying for flammable liquids (inside zone 0, 1, 2), for conveying for non-flammable liquids, for use in zone 1 and 2 (gases), for use in zone 0 (gases)
- manufacturing process acc. GMP EC 2023/2006
- conforms to RoHS guideline
- REACH according to --> Technology / Technical Information / REACH

### Temperature Range

- 40 °C to 90 °C

### Design

- AIRDUC® profile hose
- spring steel wire firmly embedded in wall
- spiral: stainless steel wire (INOX)
- wall: permanently antistatic premium ether-polyurethane (Pre-PUR®)
- wall thickness 1,0 mm approx.

### Delivery variants

- further diameters and lengths available on request
- transparent (standard)
- customer-specific branding

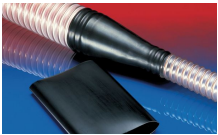
I.D. (in / mm)	outer Ø (mm)	Pressure DIN 26057 (50% Elongation) (bar)	Vacuum DIN 26057 (axially fixed) (bar)	Bending Radius (mm)	Weight (kg/m)	Dimensions in Stock (m)	Order No.
1 / 25	33.00	2,640 (4,49)	0,680 (1,00)	22.00	0.22	5 10	351-0025-1018
1,25 / 32	40.00	2,090 (3,56)	0,440 (1,00)	28.00	0.28	5 10	351-0032-1018
1,5 / 38	46.00	1,775 (3,02)	0,370 (1,00)	32.00	0.32	5 10	351-0038-1018
- / 40	48.00	1,690 (2,87)	0,355 (1,00)	33.00	0.34	5 10	351-0040-1018
2 / 50-51	58.00	1,365 (2,32)	0,285 (1,00)	39.00	0.41	5 10	351-0050-1018
2,36 / 60	68.00	1,145 (1,94)	0,235 (0,82)	45.00	0.49	5 10	351-0060-1018
2,5 / 63-65	73.00	1,055 (1,79)	0,220 (0,70)	48.00	0.59	5 10	351-0065-1018
- / 70	79.00	0,985 (1,67)	0,145 (0,83)	52.00	0.59	5 10	351-0070-1018
3 / 75-76	84.00	0,920 (1,56)	0,135 (0,72)	55.00	0.64	5 10	351-0075-1018
- / 80	89.00	0,865 (1,46)	0,125 (0,64)	58.00	0.68	5 10	351-0080-1018
3,5 / 89-90	99.00	0,770 (1,30)	0,110 (0,50)	64.00	0.75	5 10	351-0090-1018
4 / 100-102	109.00	0,695 (1,18)	0,105 (0,66)	70.00	0.97	5 10	351-0100-1018
- / 110	119.00	0,630 (1,07)	0,095 (0,54)	76.00	1.06	5 10	351-0110-1018

Overpressure and underpressure are recommended threshold operating values, products can be subjected to higher loads upon request. The bending radius is measured through the inside of the hose arch. The right to make technical modifications is reserved. All values determined at 20 °C and are approx. data. Additional information at [www.norres.com/en/technology/](http://www.norres.com/en/technology/)

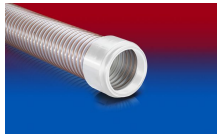
I.D. (in / mm)	outer Ø (mm)	Pressure DIN 26057 (50% Elongation) (bar)	Vacuum DIN 26057 (axially fixed) (bar)	Bending Radius (mm)	Weight (kg/m)	Dimensions in Stock (m)	Order No.
5 / 125-127	134.00	0,555 (0,94)	0,085 (0,42)	85.00	1.20	5 10	351-0125-1018
5,5 / 140	149.00	0,500 (0,84)	0,075 (0,33)	94.00	1.34	5 10	351-0140-1018
6 / 150-152	159.00	0,465 (0,79)	0,075 (0,37)	100.00	1.52	5 10	351-0150-1018
6,3 / 160	169.00	0,435 (0,74)	0,070 (0,32)	106.00	1.61	5 10	351-0160-1018
7 / 178-180	189.00	0,390 (0,66)	0,060 (0,25)	118.00	1.81	5 10	351-0180-1018
8 / 200-203	209.00	0,350 (0,59)	0,055 (0,2,0)	133.00	2.03	5 10	351-0200-1018
- / 225	234.00	0,310 (0,53)	0,040 (0,14)	145.00	2.16	5 10	351-0225-1018

Overpressure and underpressure are recommended threshold operating values, products can be subjected to higher loads upon request. The bending radius is measured through the inside of the hose arch. The right to make technical modifications is reserved. All values determined at 20 °C and are approx. data. Additional information at [www.norres.com/en/technology/](http://www.norres.com/en/technology/)

## Accessories



CONNECT 223



CONNECT 245  
FOOD



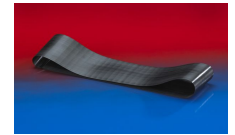
CONNECT TRI-  
CLAMP FITTING 245



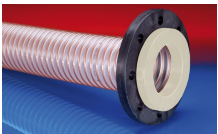
CONNECT MOULD  
ASSEMBLY 233



CLAMP 212 EC



CONNECT 228



CONNECT 244  
FOOD



CONNECT DAIRY  
FITTING 247



CONNECT 246  
FOOD



CLAMP 217



CONNECT 243  
FOOD



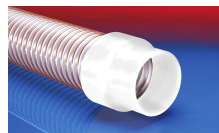
CLAMP 213



CONNECT THREAD  
FITTING 234



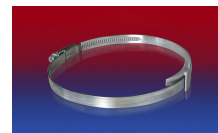
CLAMP 212



CONNECT 240 + 241  
FOOD



CONNECT 270-271



CLAMP 210 BRIDGE  
CLAMP



CONNECT ASEPTIC  
FITTING 249

Overpressure and underpressure are recommended threshold operating values, products can be subjected to higher loads upon request. The bending radius is measured through the inside of the hose arch. The right to make technical modifications is reserved. All values determined at 20 °C and are approx. data. Additional information at [www.norres.com/en/technology/](http://www.norres.com/en/technology/)