

Antistatic polyurethane hose, light, black

Application

- flexible hose/ ducting for gases and for abrasive dust, powder, fibres
- extraction unit, dedusting system, filter system, oil mist extraction
- extraction arm
- explosion hazard area
- textile industry, fiber extraction: spinning machine, knitting machine, weaving loom machine
- animal stall, animal shed: barn ventilation
- clean room ventilation, semiconductor production machine
- surface preparation: shot blasting/ sand blasting recovery e.g. at blasting chamber, ship yard, stripping machine, flooring preparation machine, grinding machine
- heating hose: exterior hose as protection hose

Properties

- lightweight and reinforced
- highly flexible + compressible 3:1
- abrasion-resistant
- good resistance to oil, gasoline and chemicals
- very good low temperature flexibility
- permanently antistatic wall: according to ISO 8031 electrical and surface resistance $<10^9 \Omega$ (according to NFPA 652 $10^8-10^9 \Omega$)
- in accordance with ATEX 2014/34/EU (1999/92/EC) and German TRGS 727: aspiration of combustible dust (zone 22 inside), for conveying of non-flammable liquids, for use in zone 1 and 2 (gases)
- conforms to RoHS guideline
- REACH according to --> Technology / Technical Information / REACH

Temperature Range

- 40°C to 90°C

- short time to 125°C

Design

- patented PROTAPE® tape hose
- spring steel wire integrated in wall
- wall: permanently antistatic premium ester-polyurethane (Pre-PUR®)
- wall thickness 0,6 mm approx.

Delivery variants

- further diameters and lengths available on request
- black (standard)
- special colours: partially coloured, completely coloured
- customer-specific branding

I.D. (in / mm)	outer Ø (mm)	Pressure DIN 26057 (50% Elongation) (bar)	Vacuum DIN 26057 (axially fixed) (bar)	Bending Radius (mm)	Weight (kg/m)	Dimensions in Stock (m)	Order No.
- / 40	47.00	1,020 (2,64)	0,335 (0,69)	27.00	0.23	10	330-0040-3030
2 / 50-51	58.00	0,820 (2,12)	0,220 (0,87)	33.00	0.37	10	330-0050-3030
2,36 / 60	60.00	0,685 (1,77)	0,180 (0,61)	38.00	0.43	10	330-0060-3030
3 / 75-76	83.00	0,550 (1,42)	0,145 (0,40)	46.00	0.54	10	330-0075-3030
- / 80	88.00	0,515 (1,33)	0,135 (0,35)	48.00	0.57	10	330-0080-3030
4 / 100-102	108.00	0,415 (1,07)	0,080 (0,31)	68.00	0.68	10	330-0100-3030
4,72 / 120	128.00	0,345 (0,89)	0,065 (0,22)	68.00	0.80	10	330-0120-3030
5 / 125-127	133.00	0,335 (0,86)	0,065 (0,20)	71.00	0.84	10	330-0125-3030
5,5 / 140	148.00	0,295 (0,76)	0,055 (0,16)	78.00	0.84	10	330-0140-3030
6 / 150-152	158.00	0,275 (0,71)	0,055 (0,14)	83.00	1.00	10	330-0150-3030
6,3 / 160	168.00	0,260 (0,67)	0,050 (0,12)	88.00	1.05	10	330-0160-3030
8 / 200-203	208.00	0,210 (0,54)	0,030 (0,11)	108.00	1.34	10	330-0200-3030

Overpressure and underpressure are recommended threshold operating values, products can be subjected to higher loads upon request. The bending radius is measured through the inside of the hose arch. The right to make technical modifications is reserved. All values determined at 20°C and are approx. data. Additional information at www.norres.com/en/technology/

Overpressure and underpressure are recommended threshold operating values, products can be subjected to higher loads upon request. The bending radius is measured through the inside of the hose arch. The right to make technical modifications is reserved. All values determined at 20°C and are approx. data. Additional information at www.norres.com/en/technology/

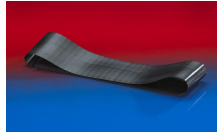
Accessories



CLAMP 213



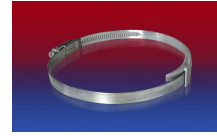
CONNECT 270-271



CONNECT 228



CLAMP 212



CLAMP 210 BRIDGE
CLAMP



CLAMP 217



CONNECT 223