

Antistatic polyurethane hose, medium-heavy, microbe resistant + flame-retardant

Application

- flexible hose/ ducting for high throughput of abrasive powder, bulk material, granulate and for gases
- extraction unit, dedusting system, filter system, oil mist extraction
- compressor, side channel blower, vacuum pump, pressure pump, pump
- municipal vehicle: sweeper, sweeping machine
- municipal vehicle: lawn mower, slope mower, leaf blower/ leaf collector

Properties

- medium-heavy duty
- highly abrasion resistant
- increased pressure and vacuum resistance

- microbe resistant
- good resistance to oil, gasoline and chemicals
- very good low temperature flexibility
- flame-retardant according to: DIN 4102-B1
- permanently antistatic wall: in accordance with ISO 8031 electrical and surface resistance <math><10^9 \Omega</math>
- conforms to RoHS guideline
- REACH according to --> Technology / Technical Information / REACH

Temperature Range

- 40 °C to 90 °C
- short time to 125 °C

Design

- patented PROTAPE® tape hose
- spring steel wire integrated in wall
- plastic coated spring steel wire
- wall: permanently antistatic premium ester-polyurethane (Pre-PUR®)
- wall thickness 0,9 mm approx.

Delivery variants

- further diameters and lengths available on request
- transparent (standard)
- Imprint: <ID> antistatic + microbe resistant + flame retardant <neutral batch no.>

I.D. (in / mm)	outer Ø (mm)	Pressure DIN 26057 (50% Elongation) (bar)	Vacuum DIN 26057 (axially fixed) (bar)	Bending Radius (mm)	Weight (kg/m)	Dimensions in Stock (m)	Order No.
- / 40	48.00	1,020 (2,640)	0,505 (1,000)	38.00	0.25	10	333-0040-0007
2 / 50-51	58.00	0,820 (2,120)	0,415 (1,000)	48.00	0.31	10	333-0050-0007
2,36 / 60	68.00	0,685 (1,770)	0,350 (0,900)	58.00	0.36	10	333-0060-0007
2,5 / 63-65	72.00	0,635 (1,635)	0,320 (0,775)	63.00	0.38	10	333-0065-0007
- / 70	78.00	0,590 (1,520)	0,300 (0,670)	68.00	0.42	10	333-0070-0007
3 / 75-76	83.00	0,550 (1,420)	0,280 (0,590)	73.00	0.44	10	333-0075-0007
- / 80	88.00	0,515 (1,330)	0,260 (0,520)	78.00	0.47	10	333-0080-0007
4 / 100-102	109.00	0,415 (1,070)	0,110 (0,485)	98.00	0.97	10	333-0100-0007
5 / 125-127	134.00	0,335 (0,855)	0,090 (0,315)	123.00	1.19	10	333-0125-0007
5,5 / 140	148.00	0,295 (0,765)	0,080 (0,250)	138.00	1.32	10	333-0140-0007
6 / 150-152	159.00	0,275 (0,715)	0,075 (0,220)	148.00	1.45	10	333-0150-0007
6,3 / 160	168.00	0,260 (0,670)	0,070 (0,195)	158.00	1.50	10	333-0160-0007
7 / 178-180	186.00	0,230 (0,595)	0,060 (0,150)	178.00	1.66	10	333-0180-0007
8 / 200-203	210.00	0,210 (0,535)	0,055 (0,125)	198.00	1.89	10	333-0200-0007
- / 250	258.00	0,165 (0,430)	0,045 (0,095)	248.00	2.32	10	333-0250-0007
- / 300	308.00	0,140 (0,350)	0,040 (0,065)	298.00	2.78	10	333-0300-0007

Overpressure and underpressure are recommended threshold operating values, products can be subjected to higher loads upon request. The bending radius is measured through the inside of the hose arch. The right to make technical modifications is reserved. All values determined at 20 °C and are approx. data. Additional information at www.norres.com/en/technology/

Overpressure and underpressure are recommended threshold operating values, products can be subjected to higher loads upon request. The bending radius is measured through the inside of the hose arch. The right to make technical modifications is reserved. All values determined at 20 °C and are approx. data. Additional information at www.norres.com/en/technology/

Accessories



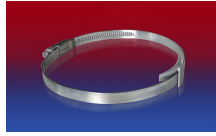
CLAMP 213



CLAMP 217



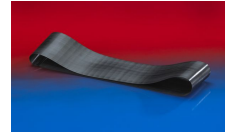
CONNECT 270-271



CLAMP 210 BRIDGE
CLAMP



CLAMP 212



CONNECT 228



CONNECT 223