

## Antistatic food hose and pharmaceutical hose, light, stainless steel (INOX)

### Application

- flexible hose/ ducting for gases and for abrasive dust, powder, fibres
- food industry, pharmaceutical industry: foodstuff, pharmaceutical
- conveying of dry foods e.g. rice, cereals, sugar, milk powder, powders, coffee, tea, grains, flour, frozen foods
- extraction arm
- explosion hazard area
- mixer, dryer, packaging machine, bulk-bag (big bag)-charging and discharging, mill

### Properties

- lightweight and reinforced
- highly flexible + compressible 3:1
- abrasion-resistant
- Approved by an independent testing laboratory for the complete hose acc. to EU-Directive 10/2011 and EC 1935/2004 and the latest EU-Directive 2015/174, food grade polyurethane, complies with: FDA 21 CFR 177.2600

- Approval acc. to EU-Directive 10/2011 (food simulant E) and EC 1935/2004
- odourless and tasteless
- microbe and hydrolysis resistant
- good resistance to oil, gasoline and chemicals
- very good low temperature flexibility
- permanently antistatic wall: according to ISO 8031 electrical and surface resistance  $<10^9 \Omega$  (according to TRGS 727  $<2,5 \cdot 10^9 \Omega \cdot m$  and NFPA 652  $10^6-10^9 \Omega$ )
- in accordance with ATEX 2014/34/EU (1999/92/EC) and German TRGS 727: pneumatic transport of flammable dusts and bulk materials (Zone 20, 21, 22 inside), aspiration of combustible dusts (Zone 22 inside),
- in accordance with ATEX 2014/34/EU (1999/92/EC) and German TRGS 727: for conveying for flammable liquids (inside zone 0, 1, 2), for conveying for non-flammable liquids, for use in zone 1 and 2 (gases), for use in zone 0 (gases)
- manufacturing process acc. GMP EC 2023/2006
- conforms to RoHS guideline
- REACH according to --> Technology / Technical Information / REACH

### Temperature Range

- 40 °C to 90 °C

### Design

- patented PROTAPE® tape hose
- spring steel wire integrated in wall
- spiral: stainless steel wire (INOX)
- wall: permanently antistatic premium ether-polyurethane (Pre-PUR®)
- wall thickness 0,6 mm approx.

### Delivery variants

- further diameters and lengths available on request
- transparent (standard)
- customer-specific branding

I.D. (in / mm)	outer Ø (mm)	Pressure DIN 26057 (50% Elongation) (bar)	Vacuum DIN 26057 (axially fixed) (bar)	Bending Radius (mm)	Weight (kg/m)	Dimensions in Stock (m)	Order No.
1,5 / 38	45.00	1,075 (4,36)	0,355 (0,77)	26.00	0.22	5 10	330-0038-1018
- / 40	47.00	1,020 (4,15)	0,335 (0,69)	27.00	0.24	5 10	330-0040-1018
2 / 50-51	58.00	0,820 (3,34)	0,220 (0,87)	33.00	0.38	5 10	330-0050-1018
2,36 / 60	68.00	0,685 (2,80)	0,180 (0,61)	38.00	0.44	5 10	330-0060-1018
2,5 / 63-65	73.00	0,635 (2,59)	0,165 (0,52)	41.00	0.47	5 10	330-0065-1018
- / 70	78.00	0,590 (2,41)	0,155 (0,45)	43.00	0.51	5 10	330-0070-1018
3 / 75-76	83.00	0,550 (2,25)	0,145 (0,40)	46.00	0.55	5 10	330-0075-1018
- / 80	88.00	0,515 (2,11)	0,135 (0,35)	48.00	0.58	5 10	330-0080-1018
4 / 100-102	108.00	0,415 (1,70)	0,080 (0,31)	58.00	0.69	5 10	330-0100-1018
5 / 125-127	133.00	0,335 (1,36)	0,065 (0,20)	71.00	0.85	5 10	330-0125-1018
6 / 150-152	158.00	0,275 (1,14)	0,055 (0,14)	83.00	1.01	5 10	330-0150-1018
6,3 / 160	168.00	0,260 (1,07)	0,050 (0,12)	88.00	1.07	5 10	330-0160-1018
7 / 178-180	188.00	0,230 (0,95)	0,045 (0,10)	98.00	1.20	5 10	330-0180-1018

Overpressure and underpressure are recommended threshold operating values, products can be subjected to higher loads upon request. The bending radius is measured through the inside of the hose arch. The right to make technical modifications is reserved. All values determined at 20 °C and are approx. data. Additional information at [www.norres.com/en/technology/](http://www.norres.com/en/technology/)

I.D. (in / mm)	outer Ø (mm)	Pressure DIN 26057 (50% Elongation) (bar)	Vacuum DIN 26057 (axially fixed) (bar)	Bending Radius (mm)	Weight (kg/m)	Dimensions in Stock (m)	Order No.
8 / 200-203	208.00	0,210 (0,85)	0,030 (0,11)	108.00	1.35	5 10	330-0200-1018
- / 250	258.00	0,165 (0,68)	0,025 (0,07)	133.00	1.67	5 10	330-0250-1018
- / 300	308.00	0,140 (0,57)	0,020 (0,05)	158.00	2.17	5 10	330-0300-1018

Overpressure and underpressure are recommended threshold operating values, products can be subjected to higher loads upon request. The bending radius is measured through the inside of the hose arch. The right to make technical modifications is reserved. All values determined at 20 °C and are approx. data. Additional information at [www.norres.com/en/technology/](http://www.norres.com/en/technology/)

## Accessories



CONNECT 223



CLAMP 217



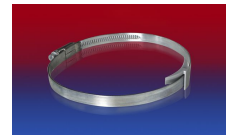
CLAMP 213



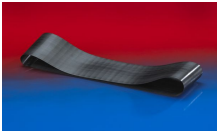
CONNECT 270-271



CLAMP 212



CLAMP 210 BRIDGE CLAMP



CONNECT 228

Overpressure and underpressure are recommended threshold operating values, products can be subjected to higher loads upon request. The bending radius is measured through the inside of the hose arch. The right to make technical modifications is reserved. All values determined at 20 °C and are approx. data. Additional information at [www.norres.com/en/technology/](http://www.norres.com/en/technology/)