

TPE hose, light, antistatic

Application

- flexible hose/ ducting for hot and cold gases and for dust, powder, fibres
- granulate/ plastic dryer, hot air dryer
- film blowing machine, cooling air at the extrusion tool
- air supply: UV dryer, IR dryer
- textile industry, steam soaking: steam iron, industrial ironing machine, smoothing iron
- bus, utility vehicle, caravan/ trailer, mobile home/ camper/ RV, boat, ship/ vessel/ marine, yacht: ventilation, heating
- heating system/ heater: fresh air supply

Properties

- light weight
- highly flexible + compressible

- highly flexible + compressible
- very good heat resistance
- good resistance to oil, gasoline and chemicals
- good resistance to alkalis and acids
- permanently antistatic wall: in accordance with ISO 8031 electrical and surface resistance $<10^9 \Omega$
- conforms to RoHS guideline
- REACH according to --> Technology / Technical Information / REACH

Temperature Range

- 40 °C to 125 °C
- short time to 150 °C

Design

- PROTAPE® tape hose
- spring steel wire integrated in wall
- hose wall: thermoplastic rubber (TPE), antistatic
- wall thickness 0,4 mm approx.

Delivery variants

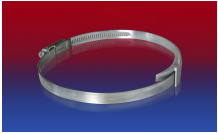
- further diameters and lengths available on request
- black (standard)
- special colours: full coloured
- customer-specific branding
- ID 1,5"/ 38mm 12/305mm compressed packed in poly bag (low transportation cost / risk, minimum storage size), ID315 500mm not compressed

I.D.	outer Ø	Pressure	Vacuum	Bending Radius	Weight	Dimensions in Stock	Order No.
(in / mm)	(mm)	(bar)	(bar)	(mm)	(kg/m)	(m)	
2 / 50-51	58.00	0,235	0,105	33.00	0.23	10	320-0050-0000
2,36 / 60	68.00	0,195	0,090	38.00	0.26	10	320-0060-0000
- / 70	78.00	0,170	0,075	43.00	0.30	10	320-0070-0000
3 / 75-76	83.00	0,160	0,070	46.00	0.33	10	320-0075-0000
- / 80	88.00	0,150	0,065	48.00	0.36	10	320-0080-0000
4 / 100-102	109.00	0,120	0,055	58.00	0.52	10	320-0100-0000
5 / 125-127	134.00	0,095	0,045	71.00	0.64	10	320-0125-0000
5,5 / 140	148.00	0,085	0,040	78.00	0.71	10	320-0140-0000
6 / 150-152	159.00	0,080	0,025	83.00	0.76	10	320-0150-0000
6,3 / 160	168.00	0,075	0,025	88.00	0.80	10	320-0160-0000
7 / 178-180	188.00	0,065	0,020	98.00	0.91	10	320-0180-0000
8 / 200-203	210.00	0,060	0,020	108.00	1.01	10	320-0200-0000
- / 250	258.00	0,050	0,015	133.00	1.21	10	320-0250-0000

Overpressure and underpressure are recommended threshold operating values, products can be subjected to higher loads upon request. The bending radius is measured through the inside of the hose arch. The right to make technical modifications is reserved. All values determined at 20 °C and are approx. data. Additional information at www.norres.com/en/technology/

Accessories

Overpressure and underpressure are recommended threshold operating values, products can be subjected to higher loads upon request. The bending radius is measured through the inside of the hose arch. The right to make technical modifications is reserved. All values determined at 20 °C and are approx. data. Additional information at www.norres.com/en/technology/



CLAMP 210 BRIDGE
CLAMP



CLAMP 213



CONNECT 223



CLAMP 217



CONNECT 270-271



CONNECT 228



CLAMP 212